

GAS-FIRED UNIT HEATER GH0618, GH0825, GH0845



Gas heating of industrial buildings
and warehouses

FEATURES

Safety

Combustion air supply from outside or inside space (optional)

- Forced draft flue with exhaust fan
- Rapid flue performance control
- Gas pressure control with solenoid valve
- The flame monitoring system
- Non flashback
- Limit temperature control sensor
- Ensure opening air flow path in heat exchanger before starting the In-Shot burner

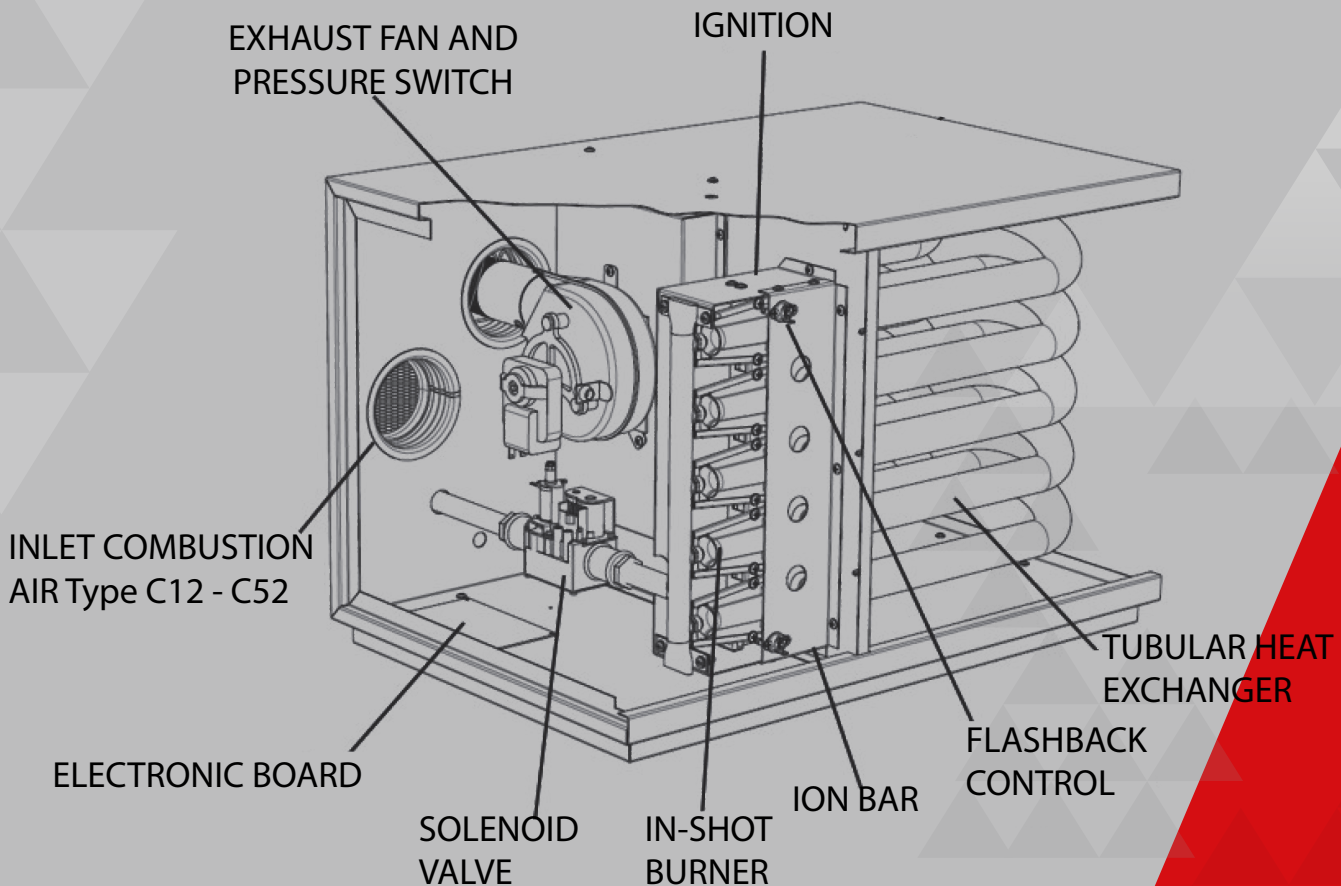
Comfort

- The fast heating with proper circulation of air with axial fan
- Possibility to manual or automatic In-Shot burner control
- Low noise axial fan and In-shot burner
- Thermostatic control and lower fuel consumption
- Adjustable air damper
- Delays in fan operating after burner performance

Efficiency

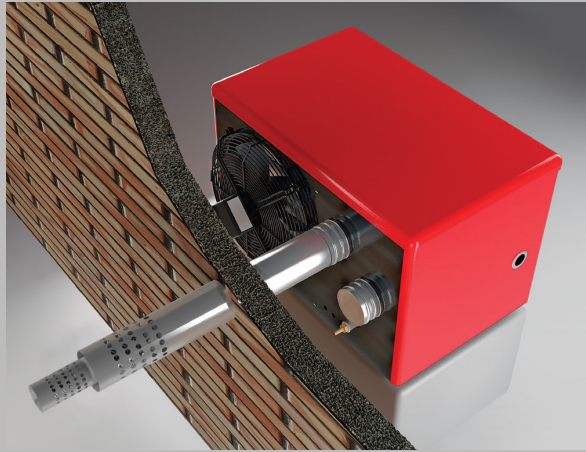
- Thermal efficiency up to 84%
- Increase Thermal surface with tubular heat exchanger
- High durability and corrosion resistance with aluminized steel heat exchanger
- High thermal efficiency with new In-Shot burner
- Ability to adjust combustion air

Components

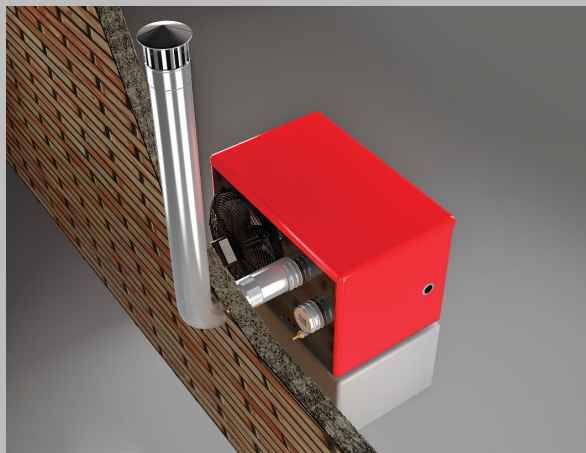


Types of installation

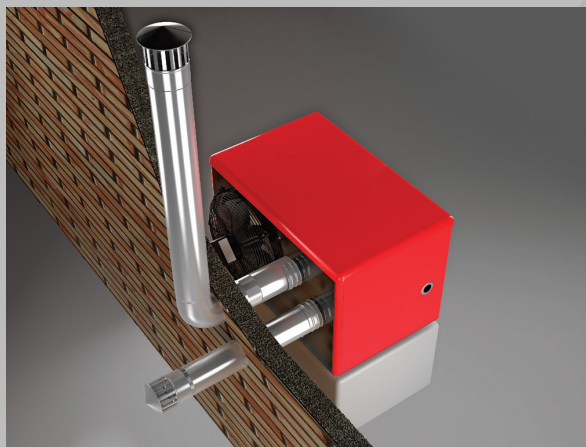
One
Combustion air from the outside, simultaneous with the exit of combustion products (co-axial flue pipe) (C12 type)



Two
Exit combustion products from flue and combustion air supply from the outside (B22 type)



Three
One path combustion air supply from the outside space, and another path combustion products leaving the heater to outside space (C52 Type)



Technical Specifications

	GH0618	GH0825	GH0845
Fuel	Natural Gas / LPG		
Thermal Output (kW)	18,8	26,1	39,5
Supply Air (m³/h)	1500	2500	4500
Air Throw (m)	4	6	10
Fuel Consumption	1,9m³/h - 1kg/h	2,6m³/h - 1,5kg/h	4,7m³/h - 2,7kg/h
Electrical Specifications	1ph / 220V 1A / 50Hz		
Diameter Flue (cm)	6	10	
Diameter Combustion Air (cm)	10		15
Noise Level dB (A)	45		
Weight (kg)	45	55	80

